

Tigex - Percussion Relief Adapter

Shown in picture:
 Tigex 150 Draught Stabiliser with
 Tigex Percussion Relief Adapter 150



Function

In the combustion process, unburned fumes can flow into the chimney system, where it can cause an uncontrolled percussive event resulting in damage to the chimney system. The Tigex Percussion Relief Adapter has a spring-loaded Relief Hatch that opens at a positive pressure in the chimney system of >100 Pa. The Relief Hatch automatically closes once the overpressure is released.

0010839

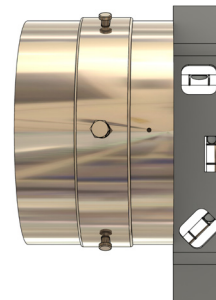
Installation

The adapter is available as a splice to be mounted between a T-pipe or flue pipe and the Tigex 150 or Tigex 180 Draught Stabilisers. The spring pin is positioned so that the Relief Hatch opens horizontally, see Fig 3. The Relief Hatch must not be positioned to open from the top or bottom of the pipe as this will disrupt the function of the Tigex Draught Stabiliser. Use the pre-drilled holes on the Tigex Draught Stabiliser and the Tigex Percussion Relief Adapter to mount the Tigex Draught Stabiliser to the Adapter correctly. The adapter's cylindrical end piece must be positioned vertically, and checked with spirit level, see Fig 4. The adapter must be sealed against the flue pipe or T-Pipe with heat-resistant sealant or other fire resistant gasket.

Fig. 3



Fig. 4



Replacing the Relief Hatch

The Relief Hatch is replaceable and available as a spare part (including Locknut, Guide washer, Spring and Spring Pin). To replace, simply loosen the locknut holding the spring pin, see Figure 5. The Relief Hatch can now be pushed to one side and removed from the adapter. Replace and reassemble with associated parts and tighten the nut. Check operation by pulling the Relief Hatch and see that it returns to its original position.

Fig. 5

